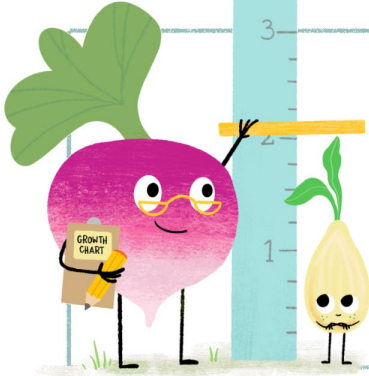


# PLANT GROWTH CHART



About my seed:

Type of seed \_\_\_\_\_

Date planted \_\_\_\_\_

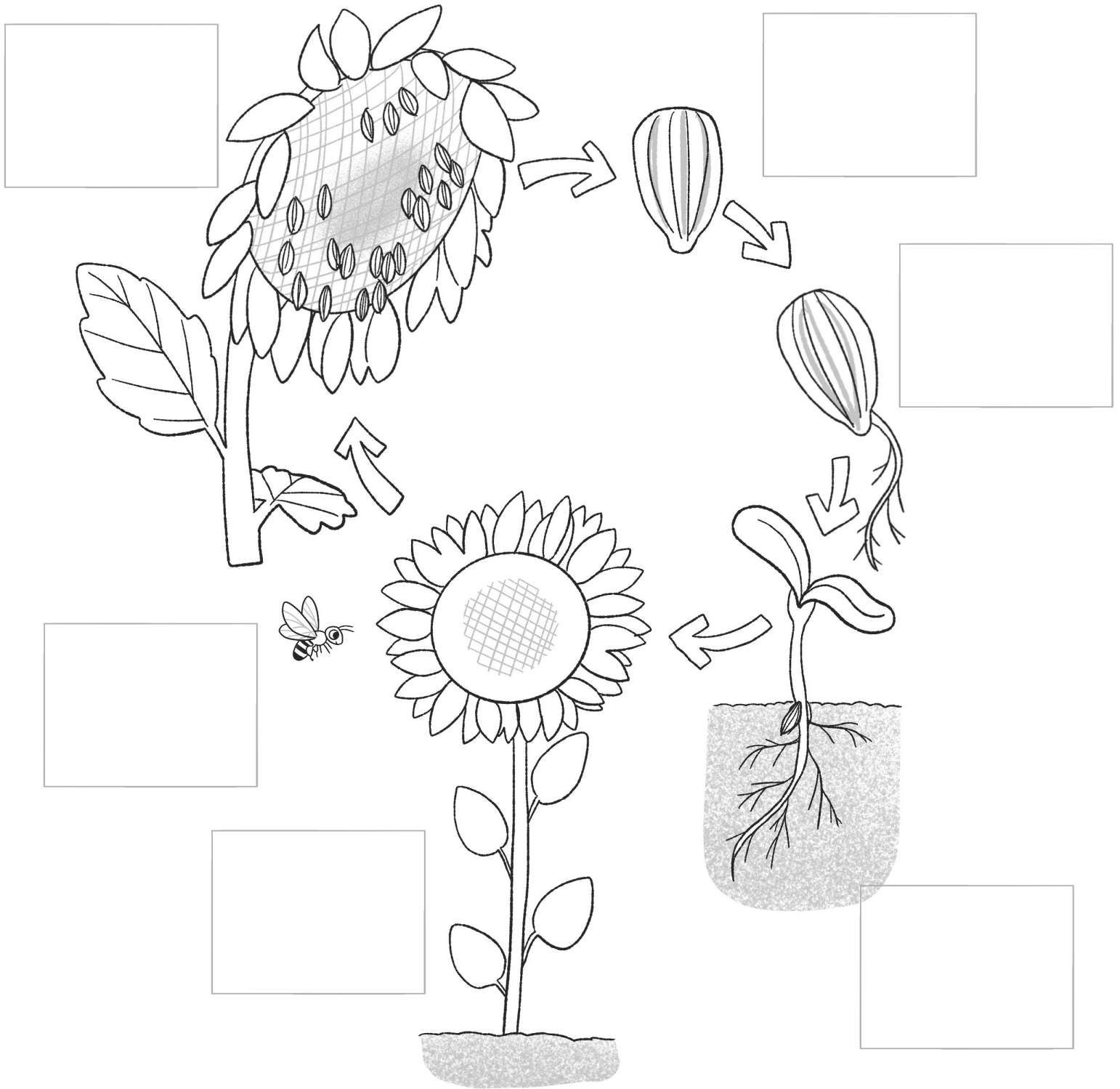
Draw your seed:



Day			
Height			
Drawing			

Day			
Height			
Drawing			

# Seed Life Cycle



Seedling  
The seed grows leaves

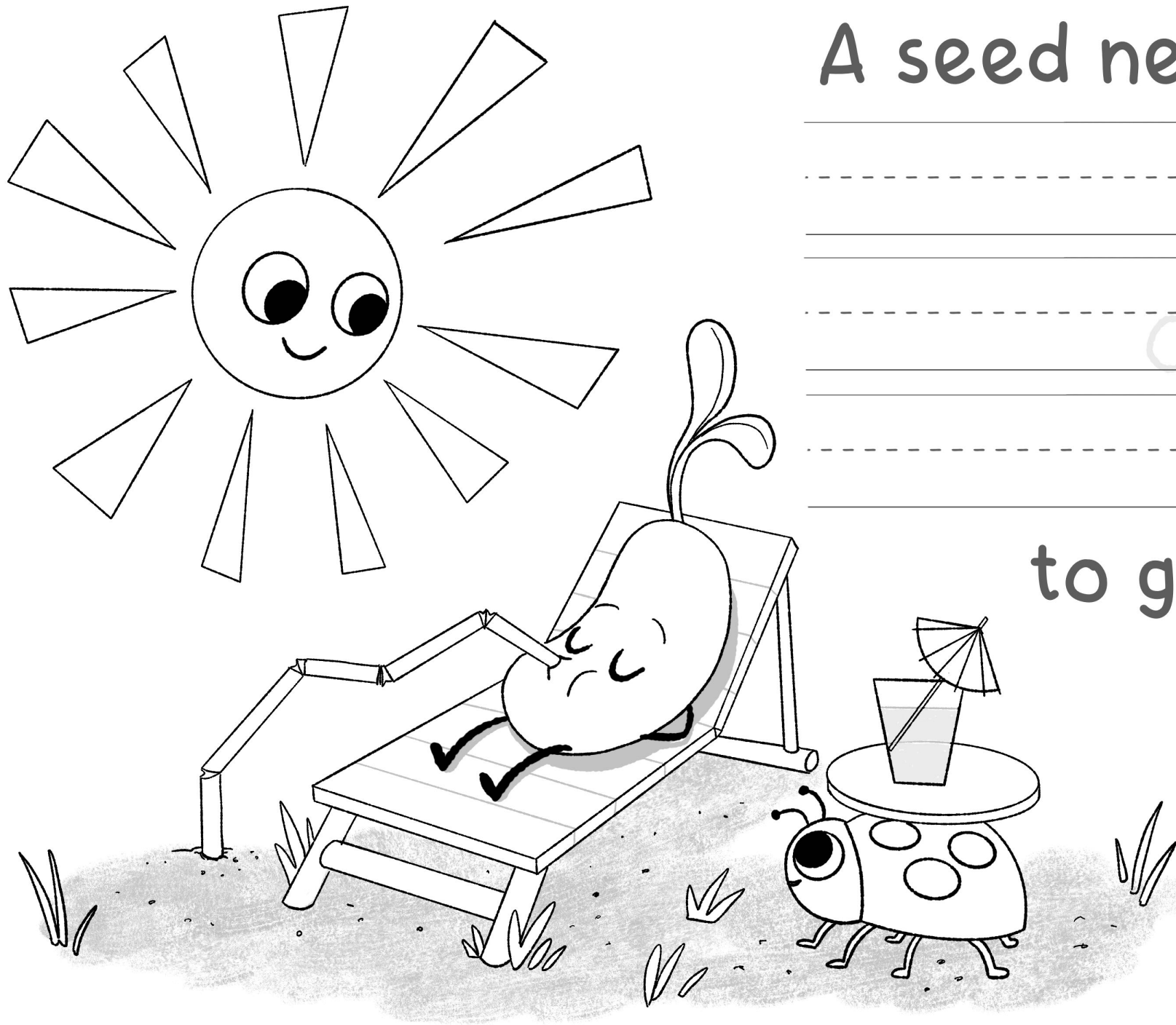
Pollination  
Wind, water, insects and other animals help transfer pollen

Mature Plant  
Grows into a plant

Seed  
A seed is planted

Seed Production  
The plant makes more seeds

Germination  
The seed grows roots



A seed needs:

---

---

---

---

---

---

---

---

and

to grow.

# Lessons from Little Seasons: Spring Seeds

Name: \_\_\_\_\_



What was something you learned from the text?

\_\_\_\_\_

-----

\_\_\_\_\_

-----

\_\_\_\_\_

-----

\_\_\_\_\_

-----

\_\_\_\_\_

-----

\_\_\_\_\_

<input type="checkbox"/> I used capital letters Seeds grow ↑	<input type="checkbox"/> Spaces between words Seeds grow ↑	<input type="checkbox"/> I used punctuation .!?
--	--	--

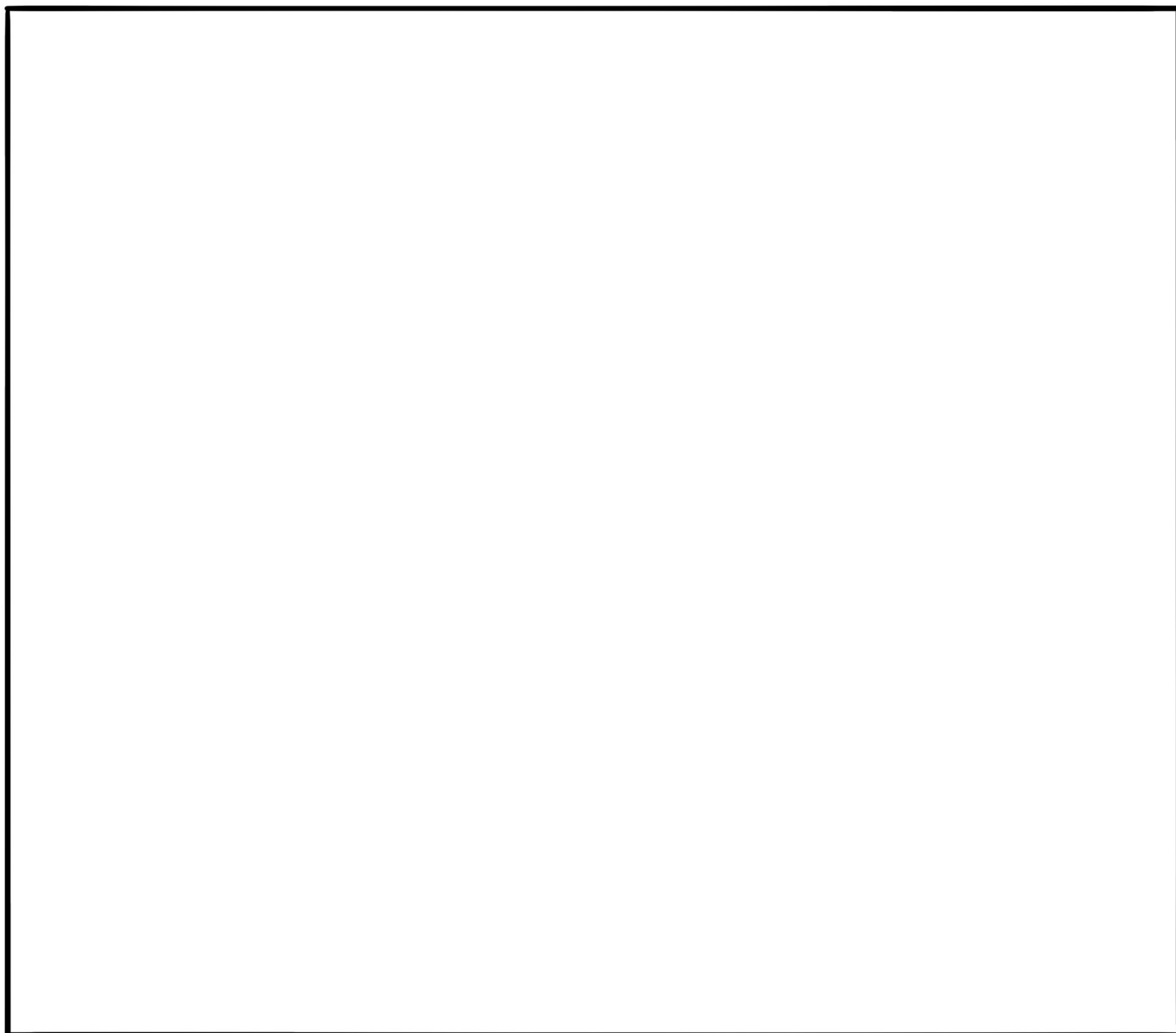
Math Application Problem. (Eureka Math, Lesson 23)

Name: \_\_\_\_\_

Draw 5 birds.

Draw enough seeds that each bird gets one. Now, draw an extra worm.

How many seeds are there? Write the number.



Use a ruler to draw a line from each bird to its seed. Did you draw too many seeds? How many seeds are there?